

World Best Nail Collating System Manufacturer

ZEUS TECHNO Inc. was established in 1979 originally as a nail manufacturer.

In 1997, we started making machines by designing them ourselves.
For more than 3 decades, we have supplied the best quality machines such as collators, nail headers and thread rollers.

ZEUS TECHNO Inc. provides the full production line up for nail manufacturers and we are very much proud of it.

As one of major players in the field, we promise that we will be continuously making our effort to being an innovative & reliable producer.

Thank you very much indeed.

C. H. Kim / C.E.O



Wire Coil Nail Production Line



CAP ≪ CN-90 ≪ RT-20 ≪ B-20



Nail Making Machines

B-20 & B-25

Hybrid Nail Making Machine



Rotary Dies & Punches



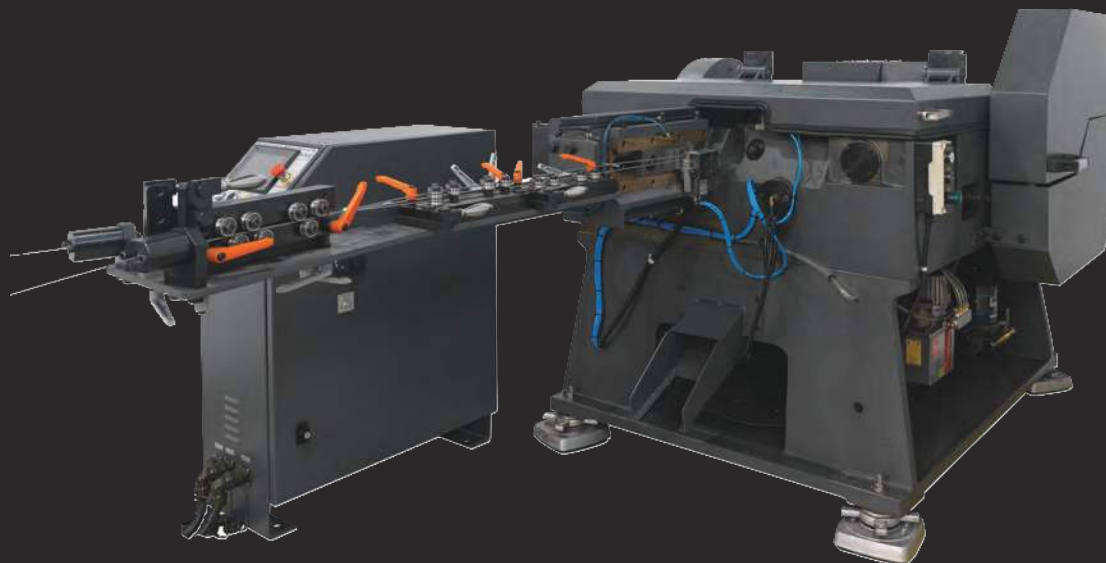
Inner Ring + Outer Ring



	B-20	B-25
Output Capacity	Up to 1 500 nails/min	Up to 1 500 nails/min
Nail Diameter	2,5-3,5mm (0.98 - 0.135 inch)	2,87 - 3,77mm (0.113 - 0.148)
Nail Length	50 - 75 mm (2 - 3 inch)	63 - 89 mm (2 1/2 - 3 1/2 inch)
Tensile Strength	700-900 MPa	700-900 Mpa
Main Motor	7,5kW (10HP)	7,5kW (10HP)
Power Consumption	6 kW max.	13 kW max.
Air Consumption	200 liters/min	200 liters/min
Weight (Approx.)	3 500 kg (7,700 lbs)	3 800 kg (8,400 lbs)
Electrical Connection	3P, 370 - 400 V, 50/60 Hz	3P, 370 - 400 V, 50/60 Hz
Air Connection	6bar (87psi), one 1/2 inch hose	6bar (87psi), one 1/2 inch hose

B-3, B-4 & B-5

Heavy Duty Nail Making Machine



B-4 Medium size nail header

B-3

Mode	Single Wire	Double Wire
Output Capacity	Up to 500 nails/min.	Up to 800 nails/min.
Nail Diameter	2,0 - 3,43mm (0.098 - 0.135 inch)	2,0 - 2,51 mm (0.078 - 0.099 inch)
Nail Length	13 - 83 mm (1/2 - 3 1/4 inch)	13 - 75 mm (1/2 - 3 inch)
Tensile Strength	700 - 900 MPa	700 - 750 MPa
Main Motor	5,5 kW (7.4 HP)	
Power Consumption	6 kW max.	
Air Consumption	300 liters/min.	
Weight (Approx.)	2 500 kg (5,500 lbs)	
Electrical Connection	3P, 370 - 400 V, 50/60 Hz	
Air Connection	6 bar (87 psi), one 1/2 inch hose	

B-4

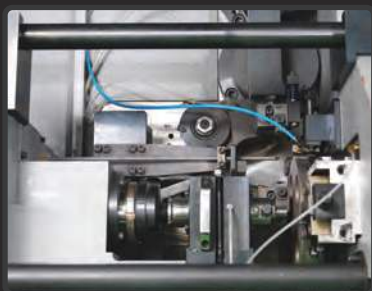
Mode	Single Wire	Double Wire
Output Capacity	Up to 450 nails/min.	Up to 800 nails/min.
Nail Diameter	2,0 - 4,15 mm (0.078 - 0.163 inch)	2,0 - 3,05 mm (0.078 - 0.120 inch)
Nail Length	13 - 108 mm (1/2 - 4 1/4 inch)	13 - 95 mm (1/2 - 3 3/4 inch)
Tensile Strength	700 - 900 MPa	700 - 750 MPa
Main Motor	7.5 kW (10 HP)	
Power Consumption	8 kW max.	
Air Consumption	300 liters/min.	
Weight (Approx.)	3 000 kg (6,600 lbs)	
Electrical Connection	3P, 370 - 400 V, 50/60 Hz	
Air Connection	6 bar (87 psi), one 1/2 inch hose	

B-5

Mode	Regular	Duplex
Output Capacity	Up to 350 nails/min.	Up to 250 nails/min.
Nail Diameter	2,2 - 6,0 mm (0.087 - 0.236 inch)	2,84 - 5,28 mm (0.112 - 0.208 inch)
Nail Length	25 - 160 mm (1 - 6 1/4 inch)	45 - 101 mm (1 3/4 - 4 inch)
Main Motor	11 kW (15 HP)	
Power Consumption	13 kW max.	
Air Consumption	300 liters/min.	
Weight (Approx.)	5 100 kg (11,200 lbs)	
Electrical Connection	3P, 370 - 400 V, 50/60 Hz	
Air Connection	6 bar (87 psi), one 1/2 inch hose	

B-7

Super Long Nail Machine



Output Capacity	Up to 250 nails/min.
Nail Diameter	3,8 - 9,0 mm (0.150 - 0.355 inch)
Nail Length	75 - 600 mm (3 - 24 inch)
Main 7Motor	11 kW (15 HP)
Power Consumption	22 kW max.
Air Consumption	200 liters/min.
Weight (Approx.)	8 000 kg (17,700 lbs)
Electrical Connection	3P, 380 - 400 V, 50/60 Hz
Air Connection	6 bar (87 psi), one 1/2 inch hose

• Features

- 1) The Feeding Rollers driven by servo motors
- 2) Wire-Feeding is controlled by encoders
- 3) Easy to set up for variable length nails

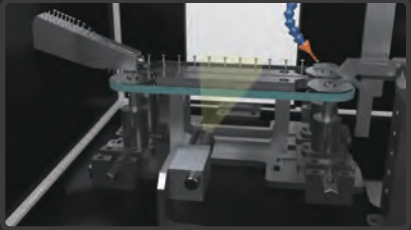
Nail Inspection Machines



360 Degrees of Nail Inspection



Camera: 2448 x 2048 Resolution, 75 FPS



CQ-10 Geometric Inspection

Output Capacity	Up to 1 500 nails/min.
Nail Diameter	2,5 - 3,77 mm (0.099 - 0.148 inch)
Nail Length	50 - 100 mm (2 - 4 inch)

- Dimensional Inspection Features: Nail Length, Nail Point, Shank Diameter, Curvature, Head Diameter, Head Thickness
- Option: Surface Inspection
- Ai Device: NDIVIA Jetson

CQ-10S Sorting Machine

Output Capacity	Up to 1 200 nails/min.
NailDiameter	2,1 - 3,05 mm (0.083 - 0.120 inch) 3,1 - 4,5 mm (0.122 - 0.177 inch)
Nail Length	45 - 100 mm (1 3/4 - 4 inch)

- Dimensional Inspection Features: Nail Length, Nail Point, Shank Diameter

Thread Rolling Machines

RT-20C

High Speed 2,500 NPM

Output Capacity	Up to 2.500 nails/min.
Nail Diameter	2,1 - 3,77 mm (0.083 - 0.148 inch)
Nail Length	30 - 100 mm (1.181 - 4 inch)
Threading Range	75 mm (3 inch)
Power Consumption	15 kW max.
Air Consumption	200 liters/min.
Weight (Approx.)	2.000 kg (4.400 lbs)
Electrical Connection	3P, 210-230 V, 50/60 Hz
Air Connection	6 bar (87 psi), one 1/2 inch hose

- Fast Feeding by Servo Drive Screw



RT-20S

Screw and Ring 2,000 Npm

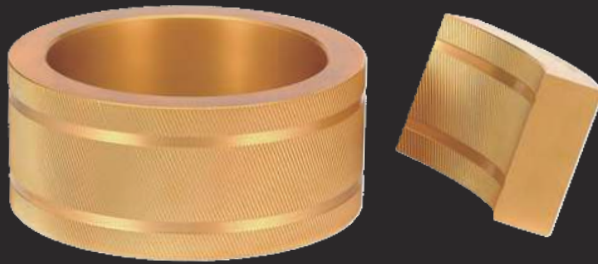
Output Capacity	Up to 2.000 nails/min.
Nail Diameter	1,8 - 4,1 mm (0.070 - 0.161 inch)
Nail Length	30 - 100 mm (1 1/4 - 4 inch)
Threading Range	75 mm (3 inch)
Power Consumption	15 kW max.
Air Consumption	200 liters/min.
Weight (Approx.)	2.000 kg (4.400 lbs)
Electrical Connection	3P, 210-230 V, 50/60 Hz
Air Connection	6 bar (87 psi), one 1/2 inch hose

- Precise Feeding by Fine Cam Drive



Dies

Tooling of Thread Rolling Machines



Tungsten Carbide Dies Set Made by ZEUS TL

3" High, 7" O.D / 5.5" I.D pf Ring Die,
1.125" Wall Thickness, 65 Degree Concentric of
Segments Main Rotary 1EA, Segments 4EA

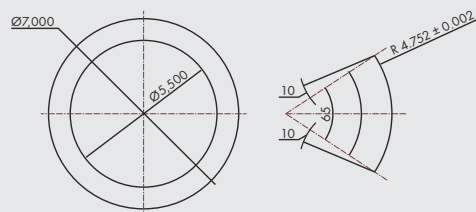
• Features

- 1) The Feeding Rollers driven by servo motors
- 2) Wire-Feeding is controlled by encoders
- 3) Easy to set up for variable length nails

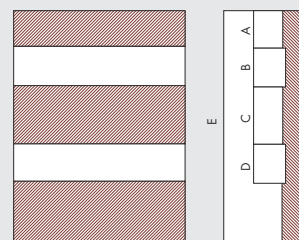


Specifications

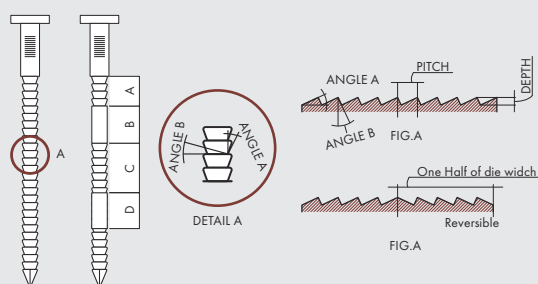
- DIE -



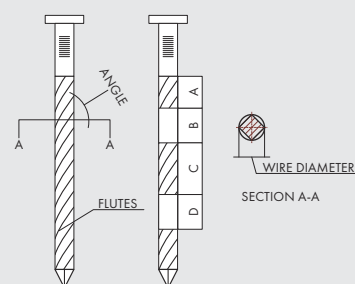
- SEGMENT -



Ring Shank



Screw Shank



Wire Weld Coil Nail Collators

CN-90

Wire Weld Coil Nail Collator



Output Capacity	Up to 3 000 nails/min.
Nail Diameter	2,1 - 3,77 mm (0.083 - 0.148 inch)
Nail Length	19 - 100 mm (3/4 - 4 inch)
Nail Angle	15 - 16 degree
Nails Per Coil	200 - 400 pcs
Power Consumption	28 kW max.
Air Consumption	300 liters/min.
Weight (Approx.)	3 500 kg (7,700 lbs)
Electrical Connection	3P, 210-230 V, 50/60 Hz
Air Connection	6 bar (87 psi), one 1/2 inch hose

- Options: Auto Bander, Dipping Coater, and Conical Coiler
- Extra: Dual Jumbo Coiler

CM-90

Wire Coil Nail Collator L/R



Output Capacity	Up to 3 000 nails/min.
Nail Diameter	2,1 - 3,77 mm (0.083 - 0.148 inch)
Nail Length	19 - 100 mm (3/4 - 4 inch)
Nail Angle	15 - 16 degree
Nails Per Coil	200 - 400 pcs
Power Consumption	28 kW max.
Air Consumption	300 liters/min.
Weight (Approx.)	3 500 kg (7,700 lbs)
Electrical Connection	3P, 210-230 V, 50/60 Hz
Air Connection	6 bar (87 psi), one 1/2 inch hose

- Options: Dipping Coater
- Extra: Single Jumbo Coiler

MC-5

Dual Wire Weld Coil Nail Collator



Output Capacity	Up to 5 000 nails/min.
Nail Diameter	2,1 - 3,77 mm (0.083 - 0.148 inch)
Nail Length	19 - 100 mm (3/4 - 4 inch)
Nail Angle	15 - 16 degree.
Nails Per Coil	200 - 400 pcs
Power Consumption	45 kW max.
Air Consumption	600 liters/min.
Weight (Approx.)	5 000 kg (11,000 lbs)
Electrical Connection	3P, 210-230 V, 50/60 Hz
Air Connection	6 bar (87 psi), two 1/2 inch hoses

- The Auto Bander is basically mounted.

• Features

- 1) High production capacity with dual line
- 2) 2 different coil nails can be produced on the machine.
- 3) Auto bander is basically mounted

CH-90

Combo Wire Coil (Regular and Roofing)



Output Capacity	Up to 2 000 nails/min.
Nail Diameter	2,1 - 3,77 mm (0.083 - 0.148 inch)
Nail Length	19 - 100 mm (3/4 - 4 inch)
Nail Angle	15 - 16 degree.
Nails Per Coil	200 - 400 pcs
Power Consumption	28 kW max.
Air Consumption	320 liters/min.
Weight (Approx.)	3 700 kg (8,200 lbs)
Electrical Connection	3P, 210-230 V, 50/60 Hz
Air Connection	6 bar (87 psi), two 1/2 inch hoses



RW-10

Manual Spot Rewelder

Output Capacity	Up to 1 000 nails/min.
Nail Diameter	2,1 - 3,77 mm (0.083 - 0.148 inch)
Nail Length	19 - 100 mm (3/4 - 4 inch)
Nail Angle	15 - 16 degree
Nails Per Stripe	200 - 400 pcs

Plastic Strip Nail Collators

MS-5

High Speed Plastic Strip Nail Collator



Output Capacity	Up to 2 500 nails/min.
Nail Diameter	2,5 - 3,77 mm (0.099 - 0.148 inch)
Nail Length	45 - 100 mm (1 3/4 - 4 inch)
Strip Angle	19 - 23 degree
Nails Per Coil	20 - 30 pcs
Power Consumption	35 kW max.
Air Consumption	500 liters/min.
Weight (Approx.)	4 000 kg (8,800 lbs)
Electrical Connection	3P, 210-230 V, 50/60 Hz
Air Connection	6 bar (87 psi), two 1/2 inch hoses



DCL-160

Plastic Strip Nail Decollator

Output Capacity	Up to 500 nails/min.
Nail Diameter	2,1 - 4,2 mm (0.099 - 0.165 inch)
Nail Length	45 - 160 mm (1 3/4 - 6 1/4 inch)
Strip Angle	19 - 23 degree
Nails Per Stripe	Up to 30 pcs

PS-160

Plastic Strip Nail Collator for Long Nails up to 160mm

Output Capacity	Up to 1 500 nails/min.
Nail Diameter	2,1 - 4,2 mm (0.099 - 0.165 inch)
Nail Length	45 - 160 mm (1 3/4 - 6 1/4 inch)
Strip Angle	19 - 23 degree
Nails Per Stripe	20 - 30 pcs
Power Consumption	30 kW max.
Air Consumption	550 liters/min.



PCS-125

Plastic Sheet Coil Nail & Screw Collator

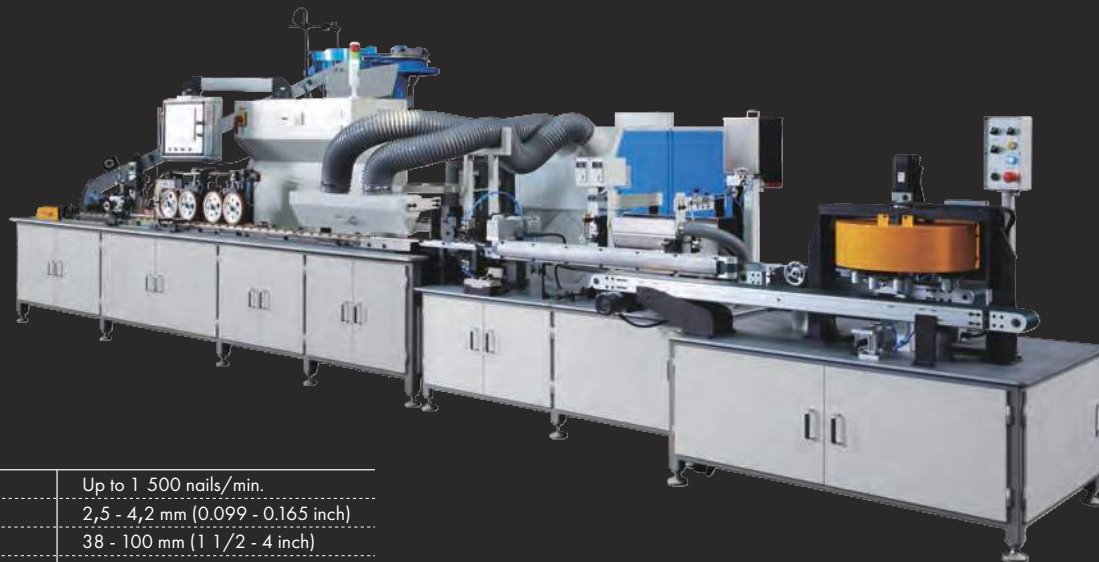
Output Capacity	Up to 1 500 nails/min. Screw Up to 1 000 pcs/min
Nail Diameter	2,1 - 3,77 mm (0.083 - 0.148 inch)
Nail Length	16 - 125 mm (0.63 - 5.0 inch)
Nail Angle	0 - 16 degree
Coil Direction	Clockwise Only (MAX type of coil)
Nails Per Coil	50 - 200 pcs
Power Consumption	10 kW max.
Air Consumption	250 liters/min.
Weight (Approx.)	3 200 kg (7000 lbs)
Electrical Connection	3P, 210-230 V, 50/60 Hz
Air Connection	6 bar (87 psi), one 1/2 inch hose



Paper Tape Stick Nail Collators

MP-2

High Speed Paper Taped Nail Collator



Output Capacity	Up to 1 500 nails/min.
Nail Diameter	2,5 - 4,2 mm (0.099 - 0.165 inch)
Nail Length	38 - 100 mm (1 1/2 - 4 inch)
Nail Angle	33 - 35 degree
Nails Per Coil	20 - 30 pcs
Power Consumption	58 kW max.
Air Consumption	500 liters/min.
Weight (Approx.)	3 800 kg (8,400 lbs)
Electrical Connection	3P, 210-230V, 50/60 Hz
Air Connection	6 bar (87 psi), two 1/2 inch hoses

MP-100

Offset & D Head Paper Taped Nail Collator



Output Capacity	Up to 1200 nails/min.
Nail Diameter	2,5 - 3,77 mm (0.099 - 0.148 inch)
Nail Length	45 - 100 mm (1 3/4 - 4 inch)
Nail Angle	33 - 35 degree
Nails Per Coil	20 - 30 pcs
Power Consumption	27 kW max.
Air Consumption	400 liters/min.
Weight (Approx.)	3 600 kg (8,000 lbs)
Electrical Connection	3P, 210-230 V, 50/60 Hz
Air Connection	6 bar (87 psi), two 1/2 inch hoses

PHOS-10

Nail Phosphating Machine



Output Capacity	Up to 7,5 kg/min.
Nail Diameter	2,1 - 4,1 mm (0.083 - 0.161 inch)
Nail Length	38 - 160 mm (1 1/2 - 6 1/4 inch)
Nail Loading Height	1 400 mm (55 inch)
Nail Unloading Height	850 mm (33.5 inch)
Power Consumption	55 kW max.

CR-10

Nail Cleaning Machine

Output Capacity	Up to 7,5 kg/min.
Nail Diameter	2,1 - 3,77 mm (0.083 - 0.148 inch)
Nail Length	19 - 100 mm (3/4 - 4 inch)
Nail Loading Height	1 100 mm (43 inch)
Nail Unloading Height	850 mm (33.5 inch)

- Remove oil & dust on the Nails
- Good enough for Wire & Plastic Strip Nails

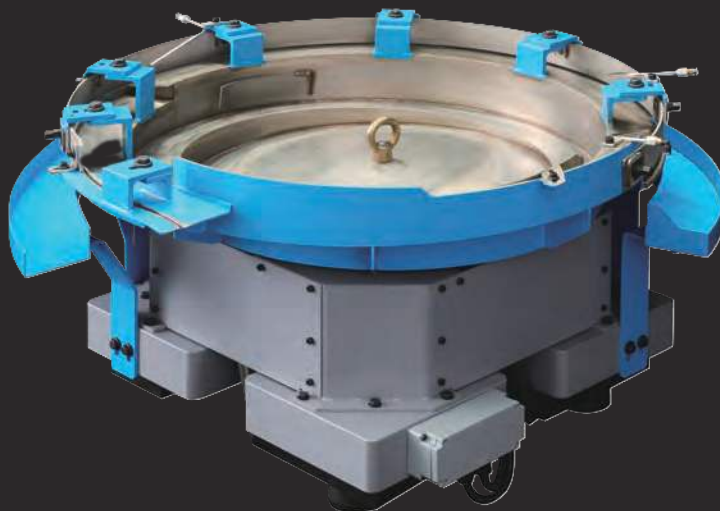


Auxiliary

RF-36A

Bowl Feeder

Output Capacity	Up to 4 000 nails/min.
Nail Diameter	2,1 - 4,1 mm (0.083 - 0.161 inch)
Nail Length	30 - 300 mm (1.2 - 11.8 inch)
Loading Weight	34 kg (75 lbs)



L-500

Feeding Hopper

Output Capacity	Up to 3 000 nails/min.
Nail Diameter	2,1 - 4,6 mm (0.083 - 0.181 inch)
Nail Length	19 - 160 mm (0.748 - 6.3 inch)
Loading Weight	600 kg (1,300 lbs)



C-101

Magnetic Tower Conveyor

Output Capacity	Up to 3 000 nails/min.
Nail Diameter	2,1 - 3,77 mm (0.083 - 0.148 inch)
Nail Length	19 - 100 mm (3/4 - 4 inch)
Nail Angle	840 mm (33 inch)
Nails Per Stripe	1 800 mm (70 inch)

- Option: De-magnetizer

FL-20

Magnetic Floor Conveyor

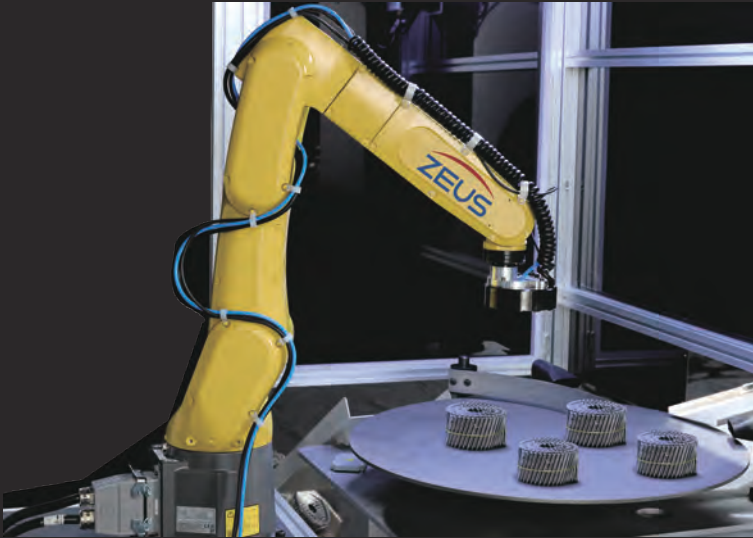


Output Capacity	Up to 3 000 nails/min.
Nail Diameter	2,1 - 3,77 mm (0.083 - 0.148 inch)
Nail Length	19 - 100 mm (3/4 - 4 inch)
Nail Loading Height	150 mm (5.9 inch)
Nail Unloading Height	980mm (38.5 inch)

Smart Factory System

CAP Ai

Wire Weld Coil Nail Robot Packer



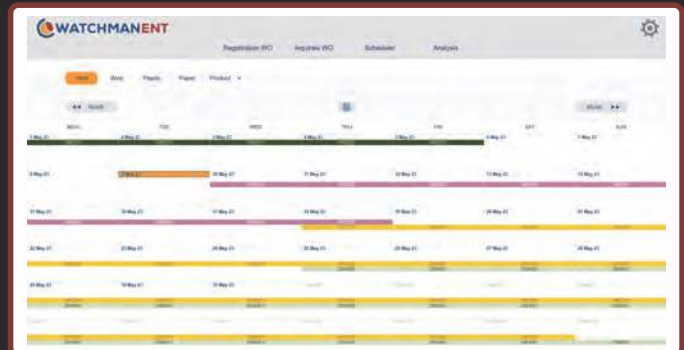
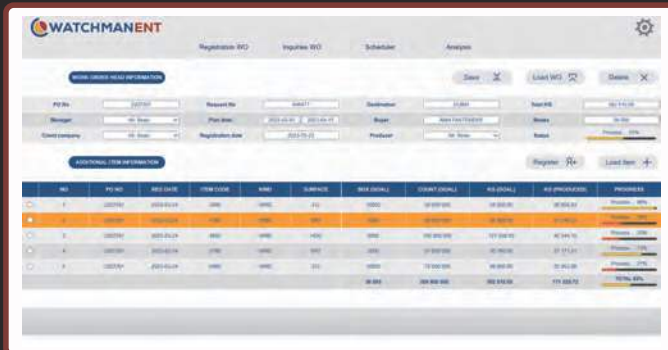
Output Capacity	Up to 2 500 nails/min.
Nail Diameter	2,1 - 3,77 mm (0.083 - 0.148 inch)
Nail Length	19 - 100 mm (3/4 - 4 inch)
Nail Angle	15 - 16 degree
Nails Per Coil	200 - 400 pcs
Power Consumption	4 kW max.
Air Consumption	100 liters/min.
Weight (Approx.)	2 000 kg (4,400 lbs)
Electrical Connection	3P, 210-230 V, 50/60 Hz
Air Connection	6 bar (87 psi), one 1/2 inch hose



CAP Ai + CN-90 + C-101

WATCHMAN

Smart Factory Solution Provider



Model 1. WATCHMAN (Basic): Monitoring function

Model 2. WATCHMAN PRO (Intermediate type): Monitoring and Statistics Features

Model 3. WATCHMAN ENTERPRISE (High-end): Monitoring and statistics, all production data from orders to production and delivery dates

	WATCHMAN	WATCHMAN PRO	WATCHMAN ENT
Build	SCADA	SCADA & DB	SCADA & DB & MES
Primary Key	Machine Code	Item Code	PO Code
Characteristic	· Realtime production monitoring	· Realtime production monitoring	· Realtime production monitoring
		· Data storage and analysis	· Data storage and analysis
			· Order execution and control
Implementation	Collect reliable operational information	Production aggregation by item and machine	Overall production process and delivery and delivery management
Implementation	· Process	· Process	· Process
	· Maintenance	· Maintenance	· Maintenance
	· Documents	· Documents	· Documents
		· Labor	· Labor
		· Quality	· Quality
			· Schedule
			· Execution Control

GLOBAL NETWORK

Headquarters

Republic of Korea

ZEUS TECHNO INC
103, Seongseo 4th Cheomdan Rd,
Daegu (42724), Republic of Korea

Email: sales@zeus-techno.com

Phone: +82 53 585 7128

Contact person: Mr. M.S. Oh

Czech Republic

ZURO TL, s.r.o.
Průmyslová 138, Zlatníky – Hodkovice
252 41 Dolní Brezany, Czech Republic

Email: tomas.lecnar@zurotl.com

Phone: +420 720 026 056

Contact person: Mr. Tomas Lecnar

Türkiye

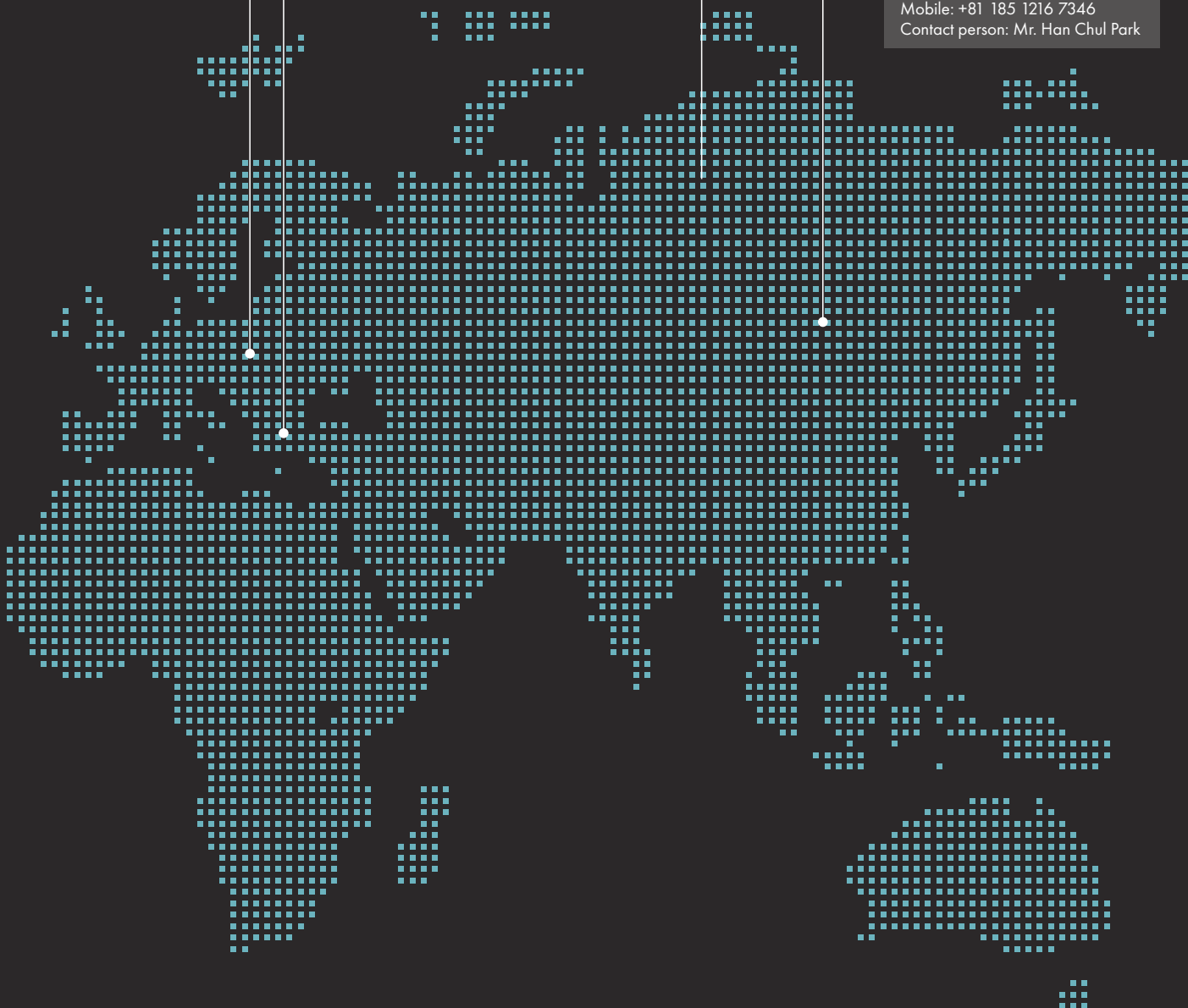
Email: omer@celikiswire.com
Office: +90 216 361 68 48
Mobile: +90 536 748 10 80
Contact person: Mr. Ömer DEMIRHAN

Middle Asia and Caucasus

Email: andrey.samsonov@zeus-techno.com
Mobile: +7-916-544-3570
Contact person: Mr. Andrey Samsonov

China

Email: hcpark@fareastinvest.com
Mobile: +81 185 1216 7346
Contact person: Mr. Han Chul Park



USA

700s Manhattan Pl #626
Los Angeles CA 90005 USA

Email: junwookim@zeus-techno.com

Phone: +1 213 999 8238

Contact person: Mr. J.W. Kim

MEXICO

Platino no.101 neighborhood
Fraccionamiento Terra Pack, in the
municipality of Santa Catarina N. L. Mexico

Email: pedro@zeus-techno.com

Phone: +82 10 7398 8071

Contact person: Mr. Pedro Marte

US & North America

Email: bdunn@zeus-techno.com

Mobile: +1 775 450 3452

Contact person: Mr. Brian Dunn

South America

Email: alex@integrasa.com

Mobile: +55-11-98786-3578

Contact person: Mr. Alexandre Yoshio Nisiyama



MEMO





